



**"Geese flying in formation travel 71% further than they can alone."**

# **BRC** 2014 Annual Report



## From the BRC

It's been quite a year!

Early in January we launched monthly webinars, which bloomed to include several series on topics that are engaging our protean community. Key themes reflect diverse interests, capabilities, and emerging challenges. D2D: Data to Drugs & Diagnostics; The Mobile Patient; Flexible BioManufacturing; Global Collaboration to Address Ebola; Introduction to the Microbiome; and The Short Course in Extracellular Vesicles presented and attracted researchers from around the globe.

True to our mission to help bridge the many silos in biomedical research, we worked directly with collaborators from industry, academic, nonprofit, government, and supplier laboratories and their teams to build these valuable programs, which are all recorded and available on our website.

Our virtual programs led to a broader and more engaged audience for our in-person programs- the conference D2D: Data to Drugs & Diagnostics, June 11-12 in New Jersey, the Summer Session Meetup August 12, and Triangle Biotech Research Symposium III October 28 in Durham, NC. We also attended a number of conferences and symposia, introducing ourselves to a wider community, particularly in major pharmaceutical companies and universities.

As we have grown, we have benefited from partnerships with relevant organizations that have shared our news, provided shelter, collaborated on program development, and extended our reach. We have more than doubled the number of individuals we reach regularly, to more than 8,000.

We are particularly appreciative of the individual participants and organizations who have reached out to us to stimulate new programs. Many of them are noted throughout this Annual Report. We have some good ideas, but the great ones come from you!

Many seeds were sown that will emerge as new programs and activities in 2015. When we hold our Virtual Annual Meeting on February 19, 2015, you'll learn more about these fresh collaborations, and the generous energies that have made them possible.

I could not close the year without acknowledging the deep and earnest support of PlanetConnect Inc. As our Founding Sponsor and Producing Partner, PlanetConnect has provided expert guidance, superior staffing, a wealth of smart ideas, and general moral support. We couldn't do it without this foundational partnership.

And finally, thank you! As you peruse this report, I hope you will find yourself imagining ways to get involved. Feel free to attend and/or sponsor our activities, and don't be shy - you are hereby sincerely invited to contact me directly and we'll work together to find an enjoyable role for activating your interest.

Joanne Gere  
Executive Director

## Table of Contents

- 4 . . . . . D2D: Data to Drugs & Diagnostics
- 6 . . . . . Triangle Biotech Research Symposium III
- 8 . . . . . BRC Webinars 2014
- 11 . . . . . Scientific Advisory Board, Staff,  
Contact, Social Media
- 12 . . . . . Partners and Memberships

"What you've accomplished with limited resources - it's phenomenal!"  
-Rich Brandwein, BRC Board Chair

Recordings for almost all of  
our events can be found at:  
[www.biopharmaresearchcouncil.org](http://www.biopharmaresearchcouncil.org)

On the Cover: "Fostering External Alliances to Drive IT Innovation in Pharma".  
Robert Boland, Directing Senior Manager of External Innovation R&D at Janssen Pharmaceuticals,  
delivering his keynote address at D2D: Data to Drugs & Diagnostics (June 11,12 2014).

## Annual Meeting

On January 29, 2014 we held our Annual Meeting at the beautiful Center for Dermal Research at Rutgers University. We awarded Outstanding Contributors, reviewed 2013, and shared our plans for the new year. It was a pleasure to meet face to face with many of our community members whom we had only known by voice and email.

## 2013 Awards

Terry Stouch  
President  
Science for Solutions

Outstanding Contributor to:  
The Scientific Advisory Board  
and the Growth of the BRC

Sam Kogsamut, Ph.D.  
Principal  
Rudder Serendip LLC

Outstanding Contributor to:  
The Scientific Advisory Board  
and the Growth of the BRC

Teri Conte  
Region Manager  
FUJIFILM Visualsonics

Outstanding Contributor to:  
BRC Forums  
on Emerging Technologies

Gabor Fari  
Director, Business Development and  
Strategy  
Health & Life Sciences  
Microsoft

Outstanding Contributor to:  
Information Technology Development

George Karam  
Global External Research Lead  
Pfizer Pharmatherapeutics

Outstanding Contributor to:  
The Development of  
BRC Best Practices in Outsourcing

Jack Heslin  
Enterprise & Key Account Executive  
MAKERBOT

Outstanding Contributor to:  
The Future  
of Biomedical Innovation



Gabor Fari, Microsoft's Director for Business Strategy, Health and Life Sciences, gave the keynote: "Transforming Research and Discovery in The Cloud".





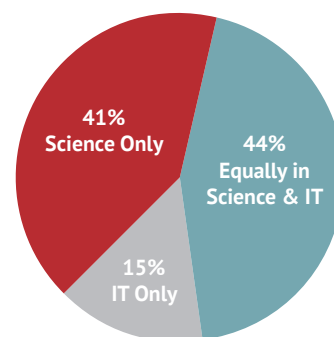
Our inaugural D2D conference brought together researchers from across the country to meet with IT professionals who are building smart tools for data generation, acquisition, analysis, sharing, and security throughout the drug pipeline from discovery to patients.

D2D: Data to Drugs and Diagnostics proved to us that there is a hunger for programs that stimulate growth in the cohort of scientists who need to understand more about working with bioinformaticists, software developers, cloud-based services, big data approaches, and the professionals who need to understand more about the kinds of support and creativity researchers need in a highly regulated, complex environment.

Keynote Speaker Robert J. Boland, Directing Senior Manager of External Innovation R&D at Janssen Pharmaceuticals, led off with "Fostering External Alliances to Drive IT Innovation in Pharma" (see cover). He underscored that decisions made through alliances and partnerships aid in driving pre-competitive innovation in IT and Pharma.

He shared Janssen R&D's new scientific data collaboration infrastructure, designed to support information sharing, and the TranSMART Knowledge Management Platform for externalizing internal technology.

Keynote Dr. Bonnie Feldman (DrBonnie360) described insights gleaned from extensive interviews with more than 150 digital health companies. Focusing upon the growing needs of patients with autoimmune disorders, she noted that, with the explosion of personal data and tracking devices, we're experiencing progress toward the technological innovations foreseen decades ago by Judy Jetson.

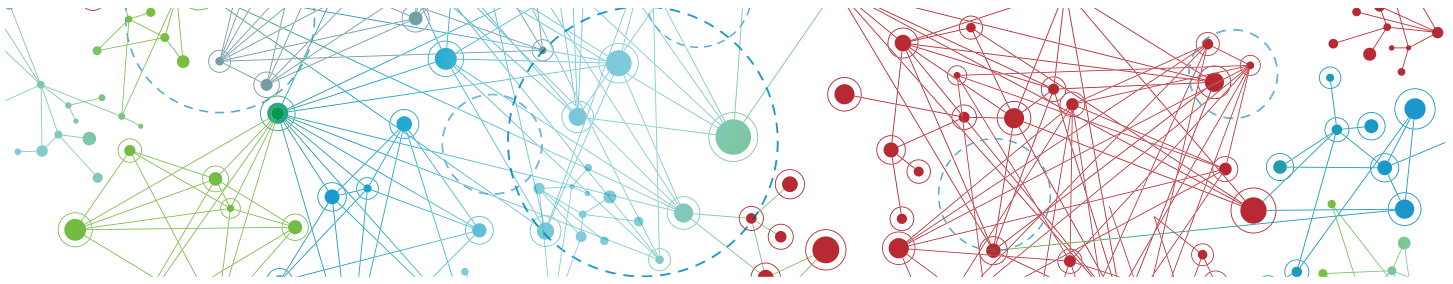


Attendee Survey- On a Continuum from "All Science" to "All IT", how would you describe your work?

## Select Sponsors







## Select Participants

Alfresco  
 Appian  
 APX Labs  
 Avere Systems  
 Ayasdi  
 BioFortis, Inc.  
 Biomatters  
 Bristol Myers-Squibb  
 Broad Institute, Harvard & MIT  
 Ceiba Solutions - Helium  
 Children's Hospital of Philadelphia  
 Columbia University  
 Covance  
 Cromoz Inc  
 Exostar  
 FDASmart Inc.  
 Genetix  
 Genome Bridge  
 GRC  
 HCL Technologies  
 Hewlett Packard  
 ImagenQ, Inc  
 IPQ Analytic  
 Janssen Diagnostics  
 Makrocare  
 Merck  
 Microsoft  
 North Carolina State University  
 Numira  
 NYU School of Medicine  
 Open Software Integrators  
 Oracle Corporation  
 PA Consulting  
 PDS Preclinical Data Systems  
 Population Diagnostics  
 Remedy Informatics  
 Rutgers University  
 Science For Solutions  
 Selventa  
 Smartlogic  
 The Avoca Group  
 The UberCloud  
 University of Dures  
 Veeva Systems  
 Washington University

## D2D Summer Sessions

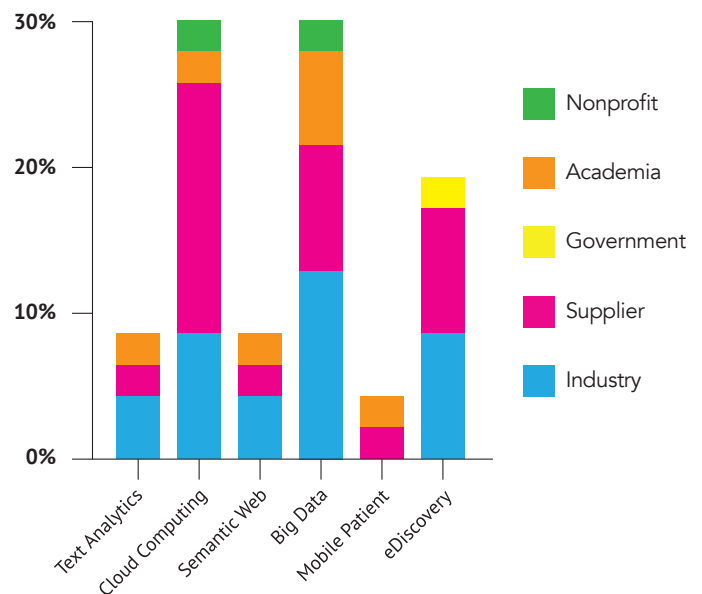


**BRCD2D Summer Session - August 12, 2014, 6-8 pm - Rutgers**

As a follow-up to the D2D Conference, and to keep the community growing we started a Meetup group that initiated during the summer.



What is an area of technology you'll be exploring in the coming year?



# Triangle Biotech Research Symposium III: Innovating Through Partnerships and Collaborations

October 28, 2014 NC Biotechnology Center, Research Triangle Park

This annual program has grown each year, reflecting the benefits of knowledge sharing on a regional basis. This year's agenda included both human and agricultural biotech approaches, stimulating discussion about common concerns and divergent strategies. Presenters described breakthroughs requiring collaboration among functional groups and leaders in expert domains that have led to the creation and acceleration of revolutionary advances.

This year's Panels and Presentations were developed by our enthusiastic committee and partner organizations:

- Moving Traditional Drug Development into the 21st Century
- Plant Pathways Elucidation Project (P2EP): A Student-driven Initiative Fusing Plant Science with Human Health
- Emerging Paradigms in Collaboration IV
- Breakthrough Technologies Roundtable
- Licensing Perspectives for Agricultural Sciences



**The Triangle Research Symposium provided new opportunities for scientific cross-fertilization, increased awareness of local support for entrepreneurship and technology transfer, and generated new collaborations among universities and companies.**

- Frances S. Ligler  
Lampe Distinguished  
Professor BME  
UNC-Chapel Hill &  
NC State University

\* Photo Credit - Ricardo Barandiaran

## 2014 Committee Members:

Rodolphe Barrangou, Ph.D.  
NC State University

Alice Bonnen, Ph.D., JD  
Myers Bigel Sibley and Sajovec, P.A.

Rosalina Bray  
Eunice Kennedy Shriver National  
Institute of Child Health and  
Human Development, NIH

Allan Wenck, Ph.D., JD  
Bayer CropSciences

Jaymie DeWitt  
Biomedical Systems

Frances Ligler, D. Phil., D. Sc.  
UNC - Chapel Hill & NC State University

Ashok Krishnamurthy, Ph.D.  
Renaissance Computing Institute

Joe Magno  
The North Carolina Center  
of Innovation Network

Cheryl Meliones  
Duke Translational Research Institute  
Duke University School of Medicine

Wanona Satcher  
Durham Urban Innovation Center  
City of Durham, NC

Michael Todd, Ph.D.  
NC Research Campus

Jacob Traverse, M.B.A.  
NC Biotechnology Center

## Select Sponsors



**MYERS BIGEL**  
PATENT LAWYERS | When innovation demands expertise.



**North Carolina  
Biotechnology Center**





## Speakers & Moderators:

Wanona Satcher  
Founder/Creative Director  
Durham Urban Innovation Center

Cheryl Meliones  
Duke Translational Research Institute

Rajendar Deora, Ph.D.  
Associate Professor  
Wake Forest School of Medicine

Mark Parisi  
Executive Director  
Asinex Corporation

Michael Todd  
Executive Director  
North Carolina Research Campus

Mary Ann Lila, Ph.D.  
Director of the Plants for Human  
Health Institute  
NCSU

Cory Brouwer, Ph.D.  
Director of the Bioinformatics  
Services Division  
UNCC

Clyde Higgs  
VP for Business Development  
Castle & Cooke NC, Inc.

Richard Linchango, Ph.D.  
Student in Bioinformatics  
UNCC

Frances Ligler, DPhil, DSc,  
Lampe Distinguished Professor of  
Biomedical Engineering,  
UNC-Chapel Hill & NC State Univ.

Bradford Walters, MD, Ph.D.  
Chief Medical Officer  
RTI International

Brian Smith  
Senior Partnership Developer, NCSU  
Office of Research, Innovation and  
Economic Development

Deborah Thompson, Ph.D.  
Director of Partnership Development  
NCSU College of Ag and Life Sciences

Rodolphe Barrangou, Ph.D.  
Associate Professor  
NC State University, CRISPR-Cas

Ashok Krishnamurthy, Ph.D.  
Deputy Director, RENCI  
Renaissance Computing Institute

Caterina Gallippi, Ph.D.  
Associate Professor  
Joint Department of Biomedical  
Engineering, UNC Chapel Hill,  
Affiliated Associate Professor,  
Electrical and Computer Engineering,  
NC State University

Andrew Murphy, Ph.D.  
Director of Bioseparation Technology,  
ProteoVec, Modular Protein  
Production

Allan Wenck, Ph.D., JD,  
Head of Trait Validation US  
Bayer CropScience

Kelly Sexton, Ph.D.  
Director, Office of Tech Transfer  
NC State University

Al Kriz, Ph.D.  
Global Strategic Alliance Manager  
Bayer CropScience

Andy Renz, Ph.D.  
Vice President Business Development  
Benson Hill Biosystems

Dan Tomso, Ph.D.  
Chief Science Officer  
Agbiome

Martha Dunn, Ph.D.  
Senior Licensing Manager  
Syngenta

Jacob Traverse  
Enterprise and Technology  
Development Director  
Agricultural Biotechnology  
NC Biotechnology Center





## 2014 Webinars

Virtual programs have allowed us to develop relationships with global thought leaders who have shared their expertise on a range of emerging themes. Almost all of these programs are archived at [www.biopharmaresearchcouncil.org](http://www.biopharmaresearchcouncil.org)

Have an idea for a webinar? Get in touch and we'll explore your idea together.



**Using Clinical Lab Data to Improve Trial Design**  
January 16, 2014



**Dimitris Agrafiotis**  
VP & Chief Data Officer  
Covance



**Collaboration in the Cloud**  
February 20, 2014



**Andrea Kirby**  
Director, Enterprise Integration  
& Customer Collaboration  
Merck



**Wolfgang Gentzsch**  
Co-Founder  
UberCloud



**Tom Johnson**  
Managing Director  
Exostar



**Next Generation Pharma Discovery:  
Collaboratively Analyzing 3D Imaging Data in the Cloud**  
May 15, 2014



**Mohamed Ayad**  
Senior Industry Specialist  
Microsoft Health and  
Life Sciences



**Michael D. Cockman, Ph.D.**  
Senior Scientist Manager  
Imaging Center Early Development  
Covance Inc.



**David Weinstein, Ph.D.**  
President & COO  
Numira



**Zhiyong Xie, Ph.D.**  
Associate Director  
Pfizer



**Flexible BioManufacturing Now:  
Facility Design in the Dawn of Single Use**  
Free Webinar - July 24, 2014



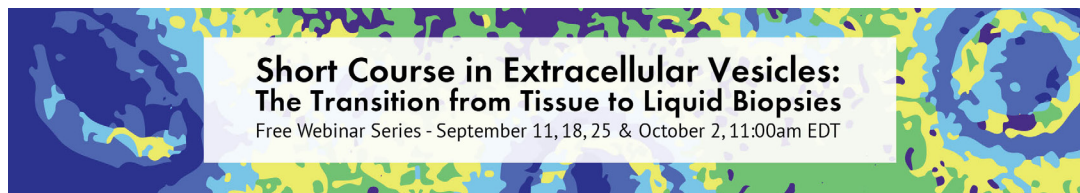
**Maik W. Jomitz**  
Chief Operating Office  
G-CON Manufacturing, Inc.



**George Wiker**  
Vice President  
M+W U.S., Inc.



**Maurice Phelan**  
BioProcess Services Leader  
GE Healthcare Life Sciences

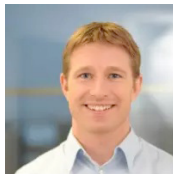


## Overview



**Jan Lötvalld**  
ISEV President  
Professor Krefting  
Research Centre  
University of  
Gothenburg, Sweden

## Applications



**Johan Skog**  
Chief Scientific Officer  
Exosome Diagnostics

## Commercialization



**Sasha Vlassov**  
Senior Staff Scientist  
Group Leader  
ThermoFisher Scientific

## Panel: Regulatory and Funding Issues



**Angel Ayuso Sacido, Ph.D.**  
Director of the Thoracic and  
Brain Tumor Laboratory  
CIOCC-IMMA  
Fundacion Hospital de Madrid,  
Spain

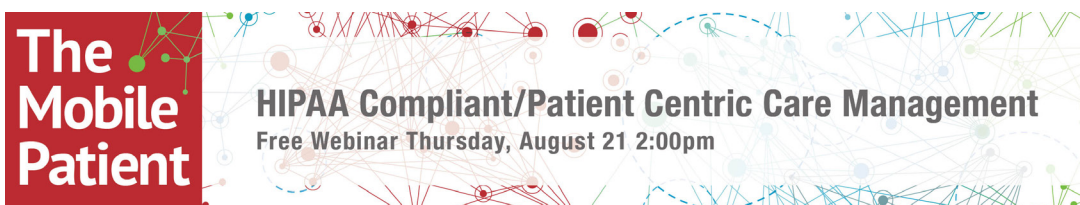


**Eva Rohde, MD**  
Head of the Transfusion  
Medicine Department &  
Director of the  
GMP-Laboratory  
Paracelsus Medical  
University  
Salzburg, Austria

## Organized By



**Winston Kuo DMSc**  
COO  
IES Diagnostics  
Editor in Chief  
Journal of Circulating  
Biomarkers



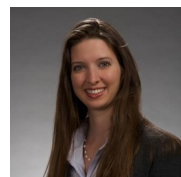
**Richard Purcell**  
President & CEO  
intelliSante



**Lilli Abdullahi**  
Manufacturing Support Associate II  
Biogen Idec

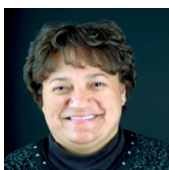


**Ashutosh Sabharwal, Ph.D.**  
Professor of Electrical &  
Computer Engineering  
Rice University



**Danielle Macario, Ph.D.**  
Affiliated Board Member  
Schulman Associates

## 2014 Webinars Continued



**Camilia R. Martin, M.D., M.S.**  
Assistant Professor  
of Pediatrics  
Harvard Medical School



**Floyd E. Dewhirst**  
Senior Member of Staff  
Department of Microbiology  
The Forsyth Institute



**Sasha Vlassov**  
Senior Staff Scientist  
Group Leader  
ThermoFisher Scientific



**Howard Young, Ph.D.**  
Deputy Chief  
NCI Laboratory of  
Experimental Immunology



**Winston Kuo DMSc**  
COO  
IES Diagnostics  
Editor in Chief  
Journal of Circulating  
Biomarkers



**Dan Didier**  
Head of Public Health  
Thermo Fisher Scientific



**Howard Young, Ph.D.**  
Deputy Chief  
NCI Laboratory of  
Experimental Immunology

## What's coming in 2015?

As we continue to build resources for our community, we are developing several new approaches that will be announced throughout the year:

Our Young Investigators group has been mentioned on our website. Through this group we will recognize early career scientists, provide opportunities to participate in committees and make presentations, and developing mentoring relationships with senior thought leaders.

We're developing a Business Roundtable to address the changing landscape of the pharma/biotech industry, in addition to supporting the BRC in building sustainability.

We have not had a formal Membership/Sponsorship program, instead focusing upon the chicken-and-egg process of developing activities while attracting partners and participants. We are working on compelling benefits that can reward our supporters and extend our capabilities.

We continue to work at establishing and deepening our Partnerships and Memberships with allied organizations. By sharing resources, ideas, and outreach, we will continually expand the support we give to other groups and appreciate their support of our efforts.

Watch for our Virtual Annual Meeting on February 19, 11 am-noon EST. We'll share our plans, award our Outstanding Contributors, and enjoy a lively keynote!



## Scientific Advisory Board

Our Scientific Advisors play a key role in developing ideas for our activities, participating on committees, and reaching out to share our news with their communities. We appreciate all of their efforts and creativity!

In 2014 we welcomed Dr. Winston Kuo to the SAB. Editor in Chief for the Journal of Circulating Biomarkers, he has been instrumental in developing the Short Course in Extracellular Vesicles, and has introduced us to many key thought leaders. Among his many accomplishment is the founding of Harvard Medical School's Laboratory for Innovative Translational Technologies, which was an integral part of the Clinical and Translational Science Award program. You can find his full biosketch and profiles of each SAB member on our website.



Jaymie DeWitt  
Director  
Business Development  
Biomedical Systems



Deborah Dougherty  
Professor & Vice-Chair  
CEO Network for  
Innovation Expertise  
Development Management  
& Global Business  
Rutgers University



Dr. Anka G. Ehrhardt  
Director  
Clinical Flow Cytometry  
Bristol-Myers Squibb



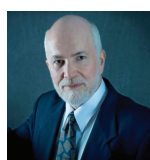
Sam Kongsamut  
Owner & Principal  
Rudder Serendip LLC



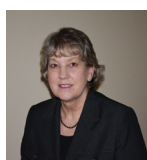
Joan Krakowski  
Clinical Research  
Project Manager  
CHDI Foundation, Inc.



Winston Kuo DMSc  
COO  
IES Diagnostics  
Editor in Chief  
Journal of  
Circulating Biomarkers



Terry Stouch  
President  
Science for Solutions



Carole Wilmot  
Owner  
C Wilmot Consulting



Howard Young  
Deputy Chief  
NCI Laboratory of  
Experimental Immunology

## Our Staff

Joanne Gere  
Executive Director

Tom Fare  
Director, Strategic Alliances

Kristin Ward  
Art Director

Ronnye Schreiber  
Board President

Rich Brandwein  
Board Chair

Contact Information:

Phone: 732-403-3137

Email: [info@biopharmaresearchcouncil.org](mailto:info@biopharmaresearchcouncil.org)

Website: [www.biopharmaresearchcouncil.org](http://www.biopharmaresearchcouncil.org)



[www.facebook.com/BRCForum](http://www.facebook.com/BRCForum)



[www.twitter.com/brcforum](http://www.twitter.com/brcforum)



[www.linkedin.com/company/  
biopharma-research-council](http://www.linkedin.com/company/biopharma-research-council)



[www.meetup.com/d2d-data-to-  
drugs-diagnostics-meetup](http://www.meetup.com/d2d-data-to-drugs-diagnostics-meetup)

## Partners & Memberships

We work with a wide range of relevant organizations to build programs, share resources, and spread the word. To explore partnering with us, send a note to [info@biopharmaresearchcouncil.org](mailto:info@biopharmaresearchcouncil.org)



### Brilliant and Beautiful Foundation(BBF)

<http://www.brilliantandbeautiful.org>

The Brilliant and Beautiful Foundation (BBF) supports the aspirations of women in scientific research and the scientific enterprise. We provide education, leadership, and mentorship opportunities for women pursuing careers in science. BBF supports the legacy of innovation, enterprise, leadership, and mentorship inspired by its founders Drs. Tiffani Bailey Lash and Tashni Dubroy



### Center for Dermal Research (CDR)

<http://www.centerfordermalresearch.org>

The vision of the Center for Dermal Research is to be the premier dermatopharmaceutics research center in NJ conducting studies on topical and transdermal compound delivery, skin biology and skin tissue engineering. The CDR will also provide quality educational opportunities for its members through workshops, seminar series, symposia and courses.



### Coalition of Small Business Innovators (CSBI)

<http://www.smallbusinessinnovators.org>

The Coalition of Small Business Innovators is a national, non-partisan coalition of organizations dedicated to stimulating sustained, private investment in small companies focusing on the development of transformative, life-changing new technologies. With small businesses working to advance research, development, and manufacturing of technologies that have the potential to solve critical economic, environmental, and societal challenges around the world, we seek to educate lawmakers and the public about the value of stimulating investment in these companies.



### Fordham University - The School of Law

<http://law.fordham.edu/cle>

Fordham Law, across from Lincoln Center in Manhattan, is a vibrant academic community dedicated equally to scholarship, the craft of lawyering, and public service. The school presents a diverse range of continuing legal education events, symposia, and public programs to further attorneys' professional development, engage the broader community in exploration of important legal topics, and provide valuable insights on national and international legal issues.



### HealthCare Institute of New Jersey (HINJ)

<http://hinj.org>

New Jersey is home to more biopharmaceutical companies than any other state in the country, or any other country in the world. The biopharmaceutical and medical technology industry is a major factor in creating a thriving economy in New Jersey, as well as making our state a leader in research and development. Founded in 1997, the HealthCare Institute of New Jersey (HINJ) is a trade association for the research-based biopharmaceutical and medical technology industry in New Jersey.



### Innovation NJ

<http://www.innovationnj.net>

"Innovation NJ" is a diverse coalition of business, higher education and government established to strengthen and enhance the culture of innovation in New Jersey by:

- Promoting public policies that encourage innovation.
- Fostering greater dialogue among members of New Jersey's innovation community.
- Increasing collaboration between New Jersey's business and higher education communities.

The Lehigh Nanotech Network (LNN) was founded by Lehigh in 2004. The LNN is an organization of nearly 200 business, education, and government members that facilitates the understanding and commercialization of nanotechnology. The LNN sponsors and conducts events to bring members together to learn about nanotechnology applications and research programs, funding opportunities, and educational initiatives. It enables regional companies to connect to the latest technologies and initiatives in the government sector, and to other members that are active in teaching, developing, applying, and commercializing nanotechnology. The LNN supports education and outreach to foster student interest and opportunities in nanotechnology. Membership is open to any company or organization that is interested in these areas.



**Mid-InfraRed Technologies for Health and the Environment (MIRTHE)**  
<http://www.mirthe-erc.org/mirthecenter/>

MIRTHE is a National Science Foundation Engineering Research Center headquartered at Princeton University, with partners City College New York, Johns Hopkins University, Rice, Texas A&M, and the University of Maryland Baltimore County. The center encompasses a world-class team of engineers, chemists, physicists, environmental and bio-engineers, and clinicians. MIRTHE's goal is to develop Mid-Infrared ( $\lambda$  – 3-30  $\mu\text{m}$ ) optical trace gas sensing systems based on new technologies such as quantum cascade lasers or quartz enhanced photo-acoustic spectroscopy, with the ability to detect minute amounts of chemicals found in the environment or atmosphere, emitted from spills, combustion, or natural sources, or exhaled.



**North Carolina Association for Biomedical Research (NCABR)**  
<http://www.ncabr.org>

The mission of the North Carolina Association for Biomedical Research (NCABR) is to promote public understanding of and support for bioscience research. NCABR provides free training and materials to K–12 educators by bringing them into research facilities to learn directly from scientists through our Rx for Science Literacy free workshop series. We also offer online courses, curricula and other publications about research and present outreach programs for the general public, including K–12 students.



**New Jersey Association for Biomedical Research (NJABR)**  
<http://njabr.com>

The New Jersey Association for Biomedical Research (NJABR) is the only organization in New Jersey dedicated solely to advocating for the availability of appropriate research models. We promote the continuing improvement of laboratory animal welfare and public understanding of the role and value of animal research.



**New Jersey Technology Council (NJTC)**  
<http://www.njtc.org>

The New Jersey Technology Council (NJTC) provides business support, networking opportunities, information, advocacy, and recognition of technology companies and their leaders. Founded in 1996, NJTC's member companies work together to support their own enterprises while advancing New Jersey's status as a leading technology center in the United States.



**UberCloud**  
<https://www.theubercloud.com>

UberCloud is the online community and marketplace where engineers and scientists discover, try, and buy Computing Power as a Service, from Clouds and even from Supercomputing Centers around the world. Engineers and scientists can explore and discuss how to use this computing power to solve their demanding problems.





## Founding Sponsor - PlanetConnect

PlanetConnect (PCI) is a Founding Sponsor of BioPharma Research Council (BRC) and has contributed significant funds and other resources to help BRC build grow as a premier association for scientists across the entire biomedical research community. As our producing partner, PlanetConnect also provides expert event management and exhibitor sales support.

## About PlanetConnect

For more than 20 years, PlanetConnect has created and organized highly effective confidential meetings of all sizes for global pharmaceutical/biotech companies and associations.

Diverse symposia have provided well run, cost efficient platforms for company-wide R&D, IT, Analytical, and Manufacturing teams. In sessions ranging from 100 to 2,500 participants, PCI's client companies have been able to effectively conduct focused meetings, executive conclaves, and departmental "Deep Dives" with bench scientists, research & development staff and executives.

Whether conducted on your company campus or off-site, the PCI approach facilitates opportunities for an organization's global scientific staff to gather to communicate research results in a secure, comfortable setting that encourages networking and information sharing.

## Unique Business Model

Strong relationships with the research supplier community means that these events can be developed at a very low cost to your company. While PCI manages all logistics for these sessions, its unique model minimizes operational costs. PlanetConnect's depth of interaction with supplier contributors, so important to biomedical research, makes this possible.

As a leading Research Conference Organizer (RCO), PCI works closely with Strategic Sourcing/Procurement groups as well as internal meeting planners to ensure that the events match company goals and are of value across all R&D groups. Key services include committee management, audio/visual production, registration, and creative engagement for attendees.



PlanetConnect  
[www.planetconnect.com](http://www.planetconnect.com)